

# Quick Guide to add Copy Protection by CopyLock Supported Duplicator

Before you start, make sure you've installed the following software:

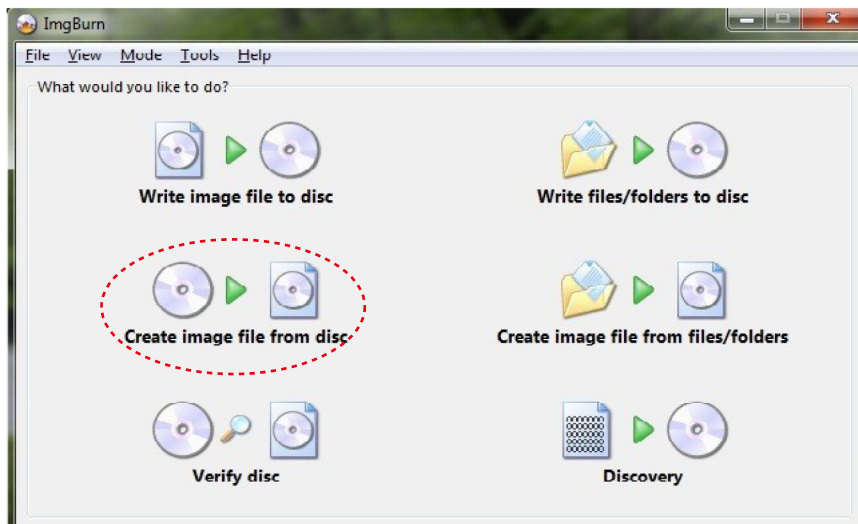
1. CopyConnect Duplicator USB Driver or Network Duplicator Center software.
2. A disc image creation software like ImgBurn (which is Included in the Installation Disc), Nero, etc.
3. CopyLock software.

Adding copy protection to your master disc for duplication involves the following easy steps:

## 1. Generate a Video Image file (ISO file) for your Master Video Disc (ex. DVD).

The procedure varies depending on the software you are using. If you are using ImgBurn (included in the Installation Disc, or downloaded @ <http://www.imgburn.com>), the procedure is as follows:

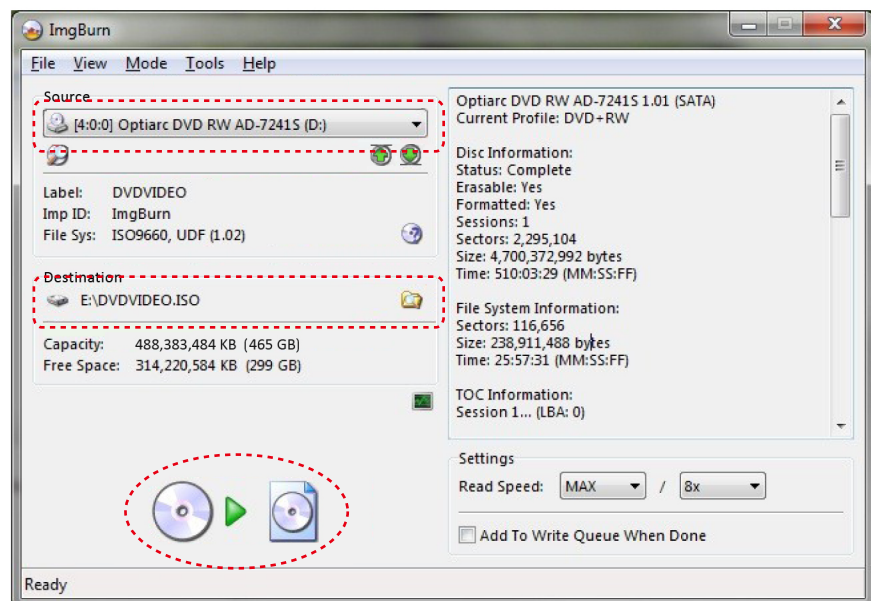
a. Click on "Create image file from disc"



b. Choose your source drive where your master disc is in.

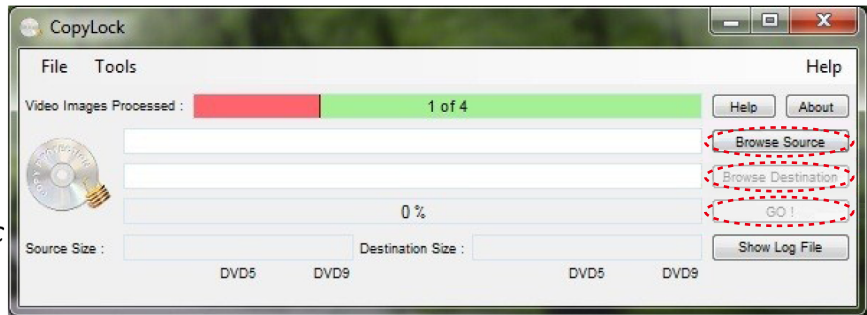
c. Choose the destination (temporary) location where the image file will be stored.

d. Click on "Create" image button



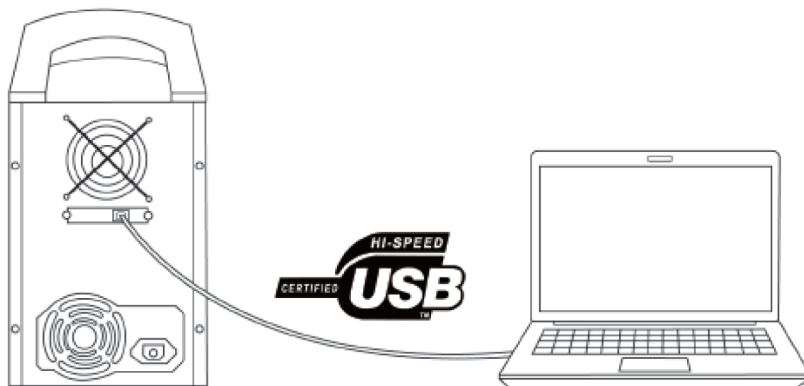
## 2. Apply copy protection to your Video Image file by using CopyLock software (included).

- a. Click on "Browse Source" to select the generated Disc Image (iso) file.
- b. Click on "Browse Destination" to select the location where you want to place the Copy Protected Disc Image (vcp) file.
- c. Click on "GO!" to start the implementation process.



## 3. Transfer the copy protected Video Image file (VCP file) to a CopyLock supported Duplicator.

- a. Confirm the USB Cable is connected between your PC & the Duplicator; or the Network cable (optional) is connected between the Duplicator & your network switch.



- b. Turn "On" the "External Connection" setting on the duplicator.

- i. Turn on the Duplicator. You shall see "1. Copy" upon boot up.

Duplicator 2.30  
1. Copy

- ii. Press the "Down" button to the "11. Setup" (or "14.Setup") menu, then press the "ENT" button to get in.

Duplicator 2.30  
11. Setup

- iii. Press the "Down" button to the "13. External Connection" sub-menu, then press the "ENT" button to get in.

Setup  
13. External Connection

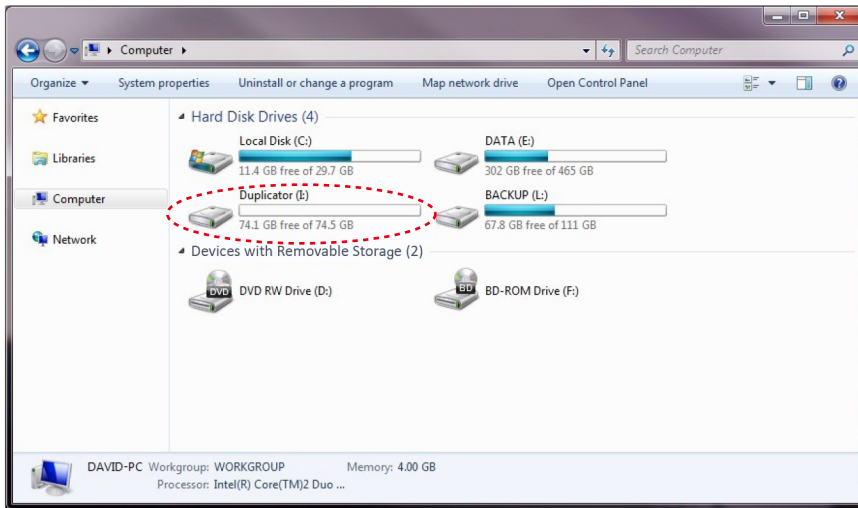
- iv. Press the "Down" button to change the setting to "On", then press the "ENT" button to submit the change.

External Connection:  
On

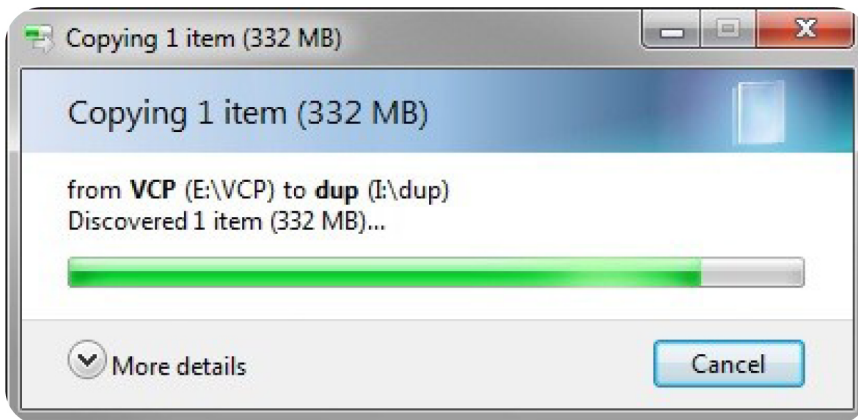
- v. Press the "ESC" button back to the "11. Setup" (or "14.Setup") menu.

Duplicator 2.30  
11. Setup

c. Confirm a drive named “Duplicator” is detected.



d. Transfer the Copy Protected Disc Image (vcp) file just created into the “Dup” folder of the Duplicator’s Internal Hard Drive.



#### 4. Producing copy protected Video Discs (DVD) from CopyLock supported duplicator.

a. Turn “Off” the “External Connection” setting on the duplicator.

i. Press the “Down” button to the “11. Setup” (or “14.Setup”) menu, then press the “ENT” button to get in.

Duplicator 2.30  
11.Setup

ii. Press the “Down” button to the “13. External Connection” sub-menu, then press the “ENT” button to get in.

Setup  
13.External Connection

iii. Press the “Down” button to change the setting to “Off”, then press the “ENT” button to submit the change and press the “ENT” button again to continue.

External Connection:  
Off

iv. Press the “ESC” button back to the “11. Setup” (or “14.Setup”) menu.

Duplicator 2.30  
11.Setup

b. Set the source as the Hard Drive

- i. Press the “Up” button to the “7. Select Source” sub-menu, then press the “ENT” button to get in.

**Duplicator 2.30**  
**7.Select Source**

- ii. Press the “Down” button to change the setting to “Hard Drive Port”, then press the “ENT” button to submit the change

**Hard Drive Port 0.0**  
**WDC WD800JD-75MSA3>**

c. To make copies from the Copy Protected Disc Image (vcp) file you just transferred.

- i. Press the “Up” button to “1. Copy”, then press the “ENT” button to get in.

**Duplicator 2.30**  
**1.Copy**

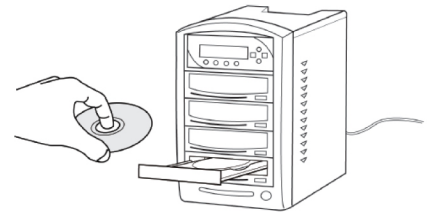
- ii. Press the “Down” button to choose the transferred Copy Protected Disc Image (vcp) file, and then press the “ENT” button to submit your selection.

**Choose Partition**  
**[PROTECTED DVD.VCP]**

- iii. Press the “ENT” button again to submit “No Counter” on the “Counter” selection screen.

**Counter:**  
**No Counter**

- iv. Place the recordable DVD media into the system.



- v. The duplication progress shall start once all discs are detected.

**Copying... H 332M**  
**0 50% 166M**

- vi. Once the duplication process is completed, all the copy protected copies will be ejected.

**PASS 3 FAIL 0 ( 3)**  
**Waiting for Blanks**