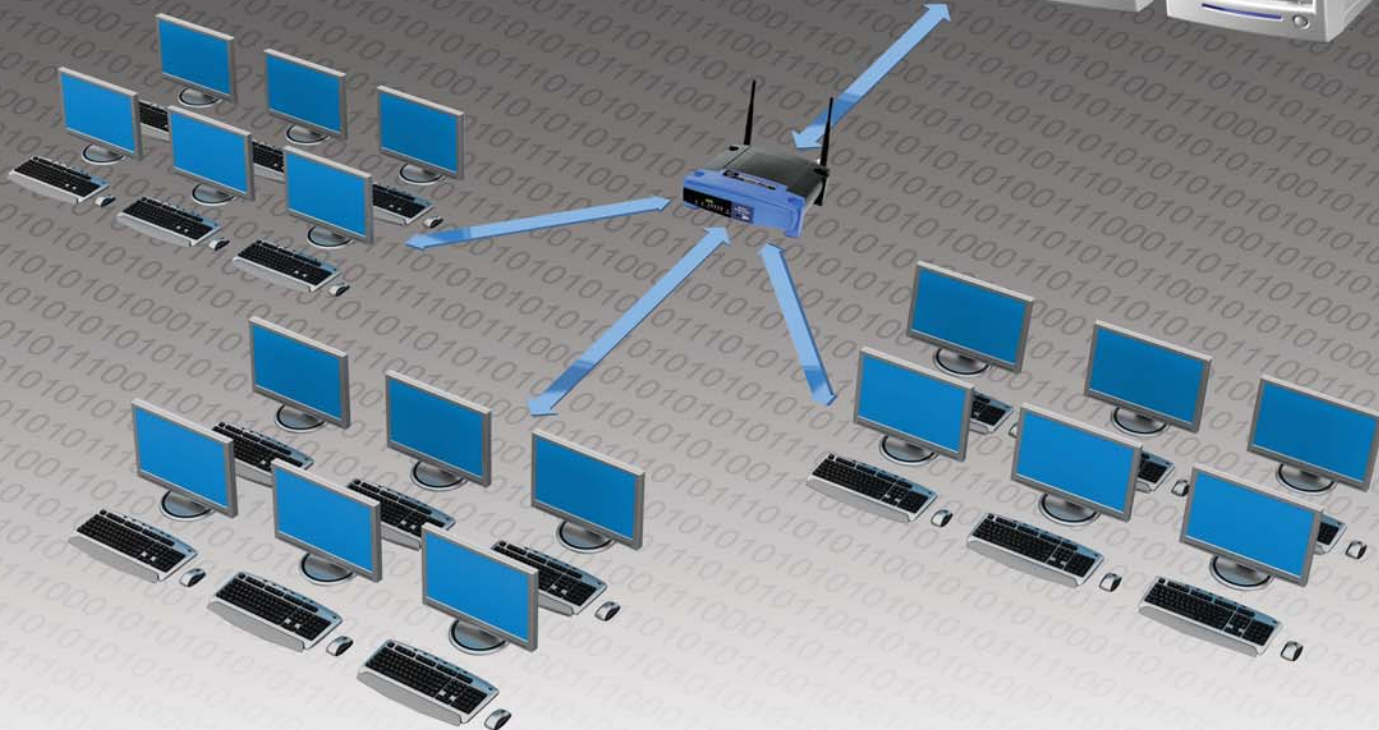




Introducing SharkNet™ Duplicators

Connect your duplicators to every PC in the office!





Key Features

- ❖ Complete Standalone Operation
- ❖ Transfer files from any PC within an internal network directly to the duplicator: Connect the duplicator to the company's internal network by LAN/Ethernet connection and transfer the image or file(s) that need to be duplicated directly to the duplicator. No longer need to burn a master disc to initiate the duplication process.
- ❖ Simultaneous Load and Copy: Copies data to the duplicator's hard drive and writer drives simultaneously on the first run from the reader drive so that all additional runs will be made from the hard drive
- ❖ Continuous Hard Drive Partitioning: The HDD partitions are created without limitations using the same amount of space as the actual content size on the disc
- ❖ Expanded CD Capabilities: Supports all common CD formats including CD-TEXT, ISRC, Over-Burned CD
- ❖ Drive Firmware Upgradeability: Capable of upgrading the drive's internal firmware directly through the Duplicator
- ❖ Expanded Buffer Memory up to 128MB**: Keeps all drives burning without pausing (known as buffer underrun) for the most stable and reliable high speed duplication

SharkNet™ Version	BLU-RAY	CD/DVD LIGHTSCRIBE	CD/DVD
Operation Type	Stand-Alone with Network Connectivity		
Writer(s)	From 2 up to max 11		
Reader	N/A	DVD-ROM	DVD-ROM
Hard Drive*	500GB HDD	160GB HDD	
Blu-Ray Formats Supported	BD-ROM, BD-R/RE, Double Layer BD-R/RE	N/A	
DVD Formats Supported	DVD-ROM, DVD-Video, DVD-Audio, DVD+R DL, DVD-R DL, DVD-R, DVD-RW, DVD+R		
CD Formats Supported	CD-ROM (Mode1 & Mode2), CD-ROM/XA (Mode2 form1 & form2), CD-DA, Mixed-Mode, Video CD, CD-I, Karaoke CD(VCD), Photo CD (Single & Multi-session), CD-Extra, CD-Bridge, ISO9660, CD-R, CD-RW, Business Card CD-R, 3" Mini CD-R		
Display	20 x 2 Blue LCD	20 x 2 Green LCD	
Color	Black	Silver or Black	
Buffer Memory	Up to 128MB **		
Network Requirement	Network Port: RJ-45 x 1; Network Speed: 10/100Mbps; Additional Ports: USB 2.0; OS Support: Windows 2000, XP, Vista 32 Bit		
Language Support	English, Spanish, French, Japanese, and more. (Chinese and Arabic available upon request)		
Partition Naming	Up to 14 characters per partition		
Account Management	32 users (Standard License) / 64 users (Premium License)		
Auto Counter	Up to 9,999 per title		
LightScribe Supported	No	Yes	No
Power Supply	Input : 90 ~ 240 V, Up to 500 WATT max**		
Operating Humidity	20% ~ 80%		
Temperature Extremes	40°C (104°F) / 5°C (41°F)		
Regulations	FCC, CE, RoHS, & UL***		

Additional Features

- ❖ AutoCopy feature: Fast duplication without pressing any buttons
- ❖ Account Management (Password Protection): This function will authorize only specific user(s) to operate the duplicator with their preferred settings
- ❖ Able to assign numerous passwords for multiple users
- ❖ Auto-Counter Technology: Displays the total number of discs successfully copied compared to desired output for each project
- ❖ Hard Drive Partition/Image Name Editing: Simply stated you can name the images stored on the hard drive partitions
- ❖ User Friendly Interface with 'easy-to-read' LCD Display: Offers easy to recognize and use terms and operations on the LCD display for simple usage
- ❖ Aluminum Case used to provide a highly functional and attractive exterior
- ❖ Provides the format of the disc & the disc manufacturer's information
- ❖ Selectable Disc Burning Speeds: Ability to increase or decrease duplication speed for supported formats
- ❖ Creates Mix Compilation Audio CD: Able to compile multiple tracks onto a single disc from multiple sources

*Higher capacity hard drive is available
 **The buffer memory and power supply will differ based on the number of targets.
 ***The UL marking only applies to specific units

Throughput Capacity Per Hour

Target	1	2	3	4	5	6	7	8	9	10	11	12	13	14	15
350 MB CD *at 52x duplication speed	24	48	72	96	120	144	168	192	216	240	264	288	312	336	360
2.5 GB DVD *at 20x duplication speed	12	24	36	48	60	72	84	96	108	120	132	144	156	168	180
12.5 GB Blu-Ray *at 6x duplication speed	5	10	15	20	25	30	35	40	45	50	55	60	65	70	75